



North

Yorkshire County Council

Background to the call-in

“A Judicial Review even if successful would perpetrate what is perceived by many as an unfair system. Efforts should be made to establish a consensus amongst interested parties”



North

Yorkshire County Council

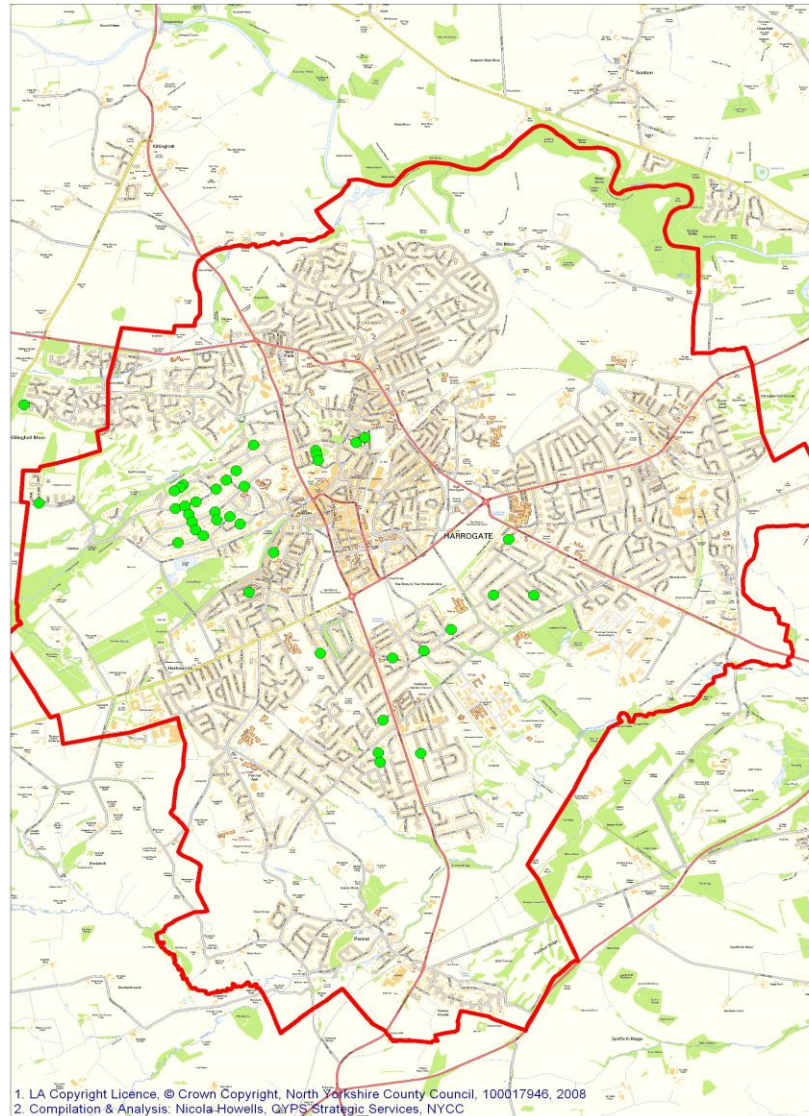
Some facts and figures

- 40+ objectors (58 parents)
- 6000 children in Harrogate town and rural primary schools
- Harrogate Grammar – 256 places a year



North

Yorkshire County Council



1. LA Copyright Licence, © Crown Copyright, North Yorkshire County Council, 100017946, 2008
2. Compilation & Analysis: Nicola-Howells, QPS Strategic Services, NYCC



North

Yorkshire County Council

Adjudicator's Determination

“The arrangements as determined by North Yorkshire County Council stand for admission in 2009, but that a full consultation on possible models for allocating places be conducted before determining arrangements for 2010 to achieve more equitable arrangements for all applicants both town and rural at the Harrogate Community Schools”



North

Yorkshire County Council

2007 Admissions Code of Practice

Para 28

“I am not persuaded that there is an alternative for the arrangements to be used for admission for 2009 that would not provide great fairness and not unintentionally introduce a different or even greater degree of inequity”

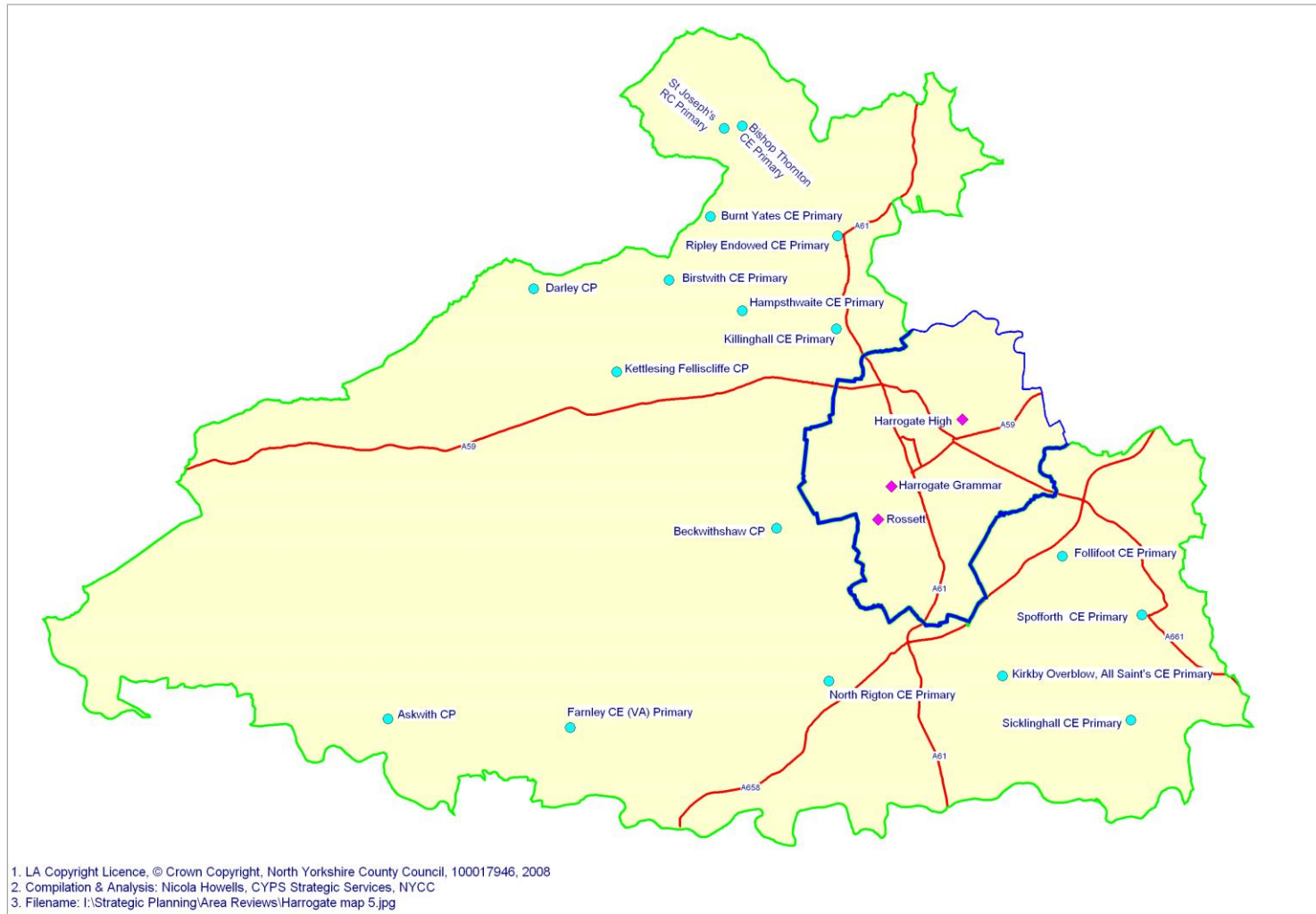
Para 31

“It is not practical to devise alternative ways of allocating places and to test the advantages and disadvantages of each of them to ensure that different arrangements are not even more unfair”



North

Yorkshire County Council



Present system

- “Rural passport”
- Equal preference
- 9 extra rural children
- 4 extra town children
- Distance 0.78 instead of 1 mile



North

Yorkshire County Council

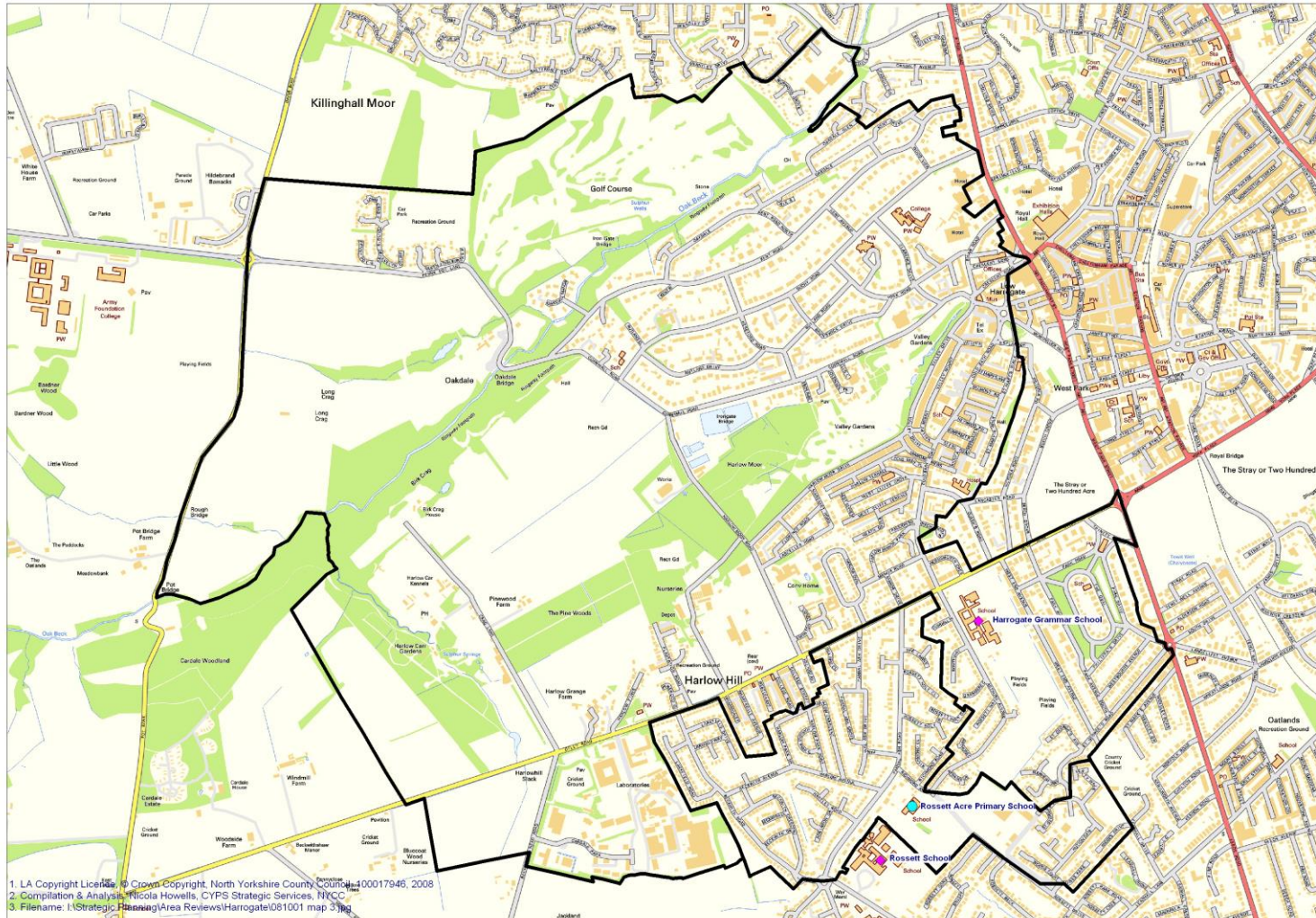
Catchment areas

- How would we divide up the town and country?
- The church school factor
- Tie breaker distance or lottery



North

Yorkshire County Council



Pro-rata

2 possible systems

- Overall pro-rata town and rural
- By primary school catchment area
- Tie breaker distance or lottery



North

Yorkshire County Council

Banding

- All children allocated to band by tests
- Tiebreaker distance or lottery



North

Yorkshire County Council

Lottery/ballot

- All children treated equally
- Number allocated on application form
- Siblings?
- In law it's fair and equal. In reality, how acceptable is it?